

# **HUSKY** **WeatherBEATER™** **Custom Vehicle Floor Protection**

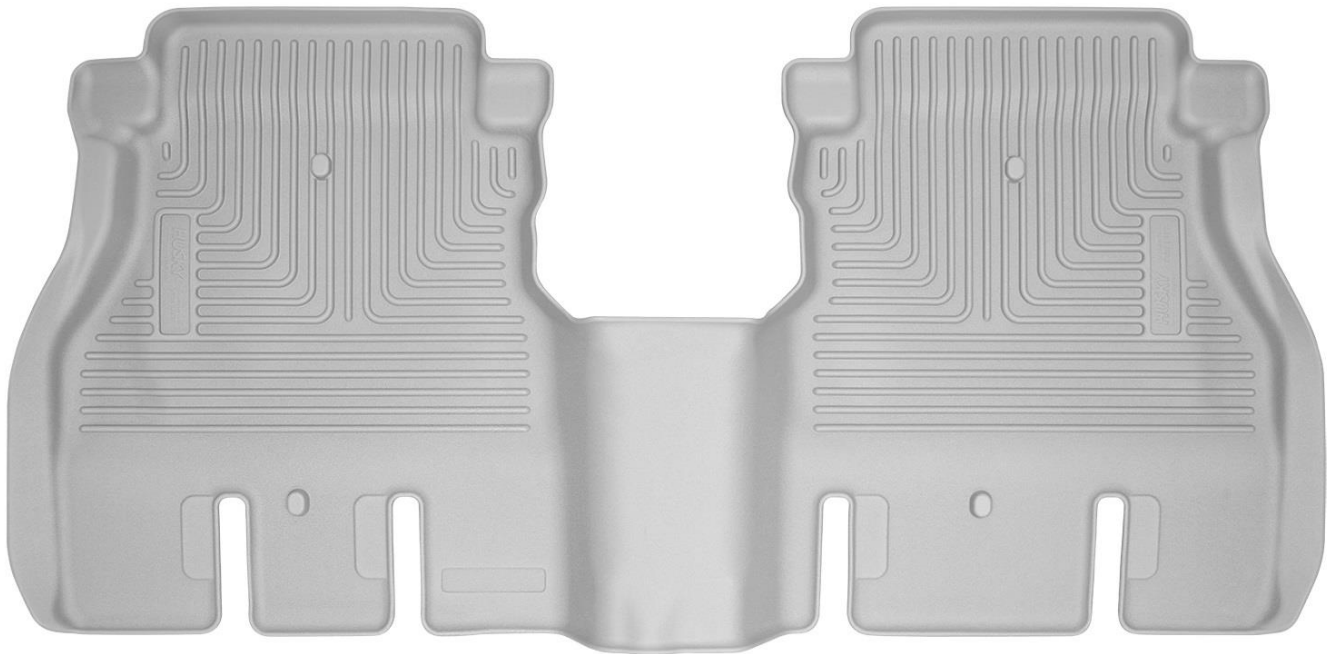
## CARE AND USE INSTRUCTIONS

---

Thank you for selecting a WeatherBeater™ Floor Liner from Winfield Consumer Products. Your new 2<sup>nd</sup> seat liner is custom molded to fit your Jeep Wrangler Unlimited 4-Door. The liner is made to take the place of your factory floor mats. **For correct fit, it is necessary to remove the factory floor mats before installing your new floor liners.** However, do not remove the factory-installed carpeting.

Your liner is molded using an engineering resin that is lightweight and extremely tough and durable. The easiest way to clean your liner is with a damp cloth or sponge. If using a cleaner, 409® or Glass Plus® work well. Use of Armor All®, Son-of-a-Gun® or similar items is discouraged as these products make the liner slick.

### **SECOND SEAT FLOOR LINER INSTALLATION INSTRUCTIONS FOR JEEP WRANGLER UNLIMITED (4-DOORS)**



PRIOR TO INSTALLING YOUR 2<sup>nd</sup> SEAT LINER, SLIDE BOTH FRONT ROW SEATS COMPLETELY FORWARD AS THIS WILL ALLOW EASIER ACCESS TO THE FLOOR IN THE 2<sup>ND</sup> ROW. WITH THIS DONE, INSTALL THE LINER, POSITIONING IT AS SHOWN ABOVE. HOLD THE FRONT EDGE OF THE LINER UP AT A 45° ANGLE AND SLIDE THE REAR SECTION OF THE LINER INTO PLACE AROUND THE SEAT SUPPORTS. FINALLY, LOWER THE FRONT EDGE. WITH THE LINER INSTALLED, REPOSITION THE FRONT SEATS AS DESIRED.